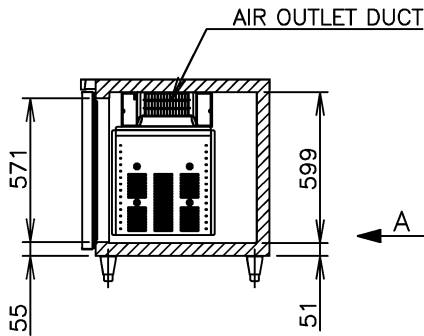
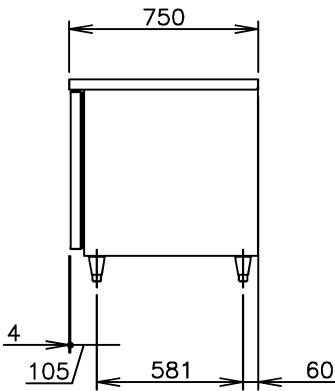
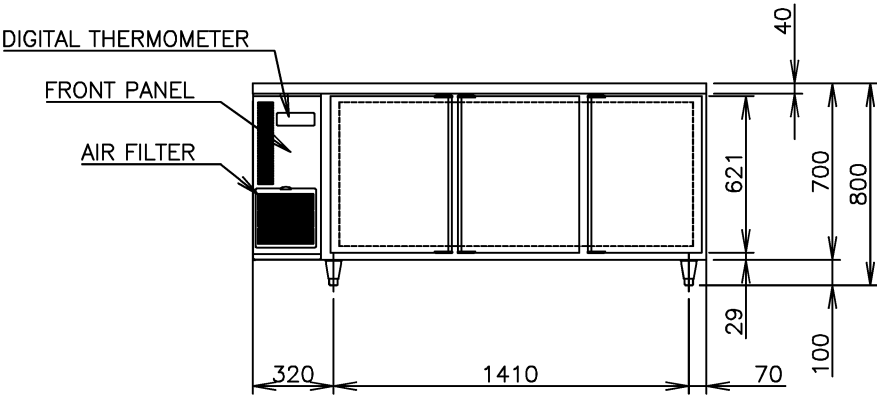
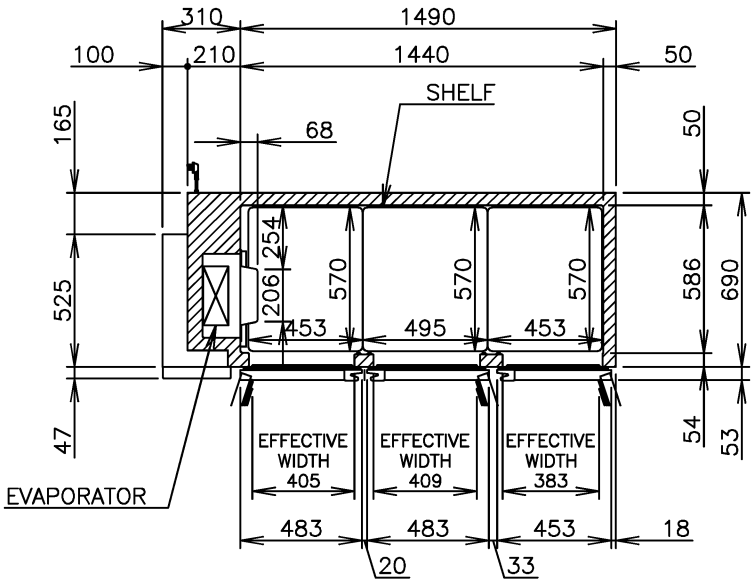
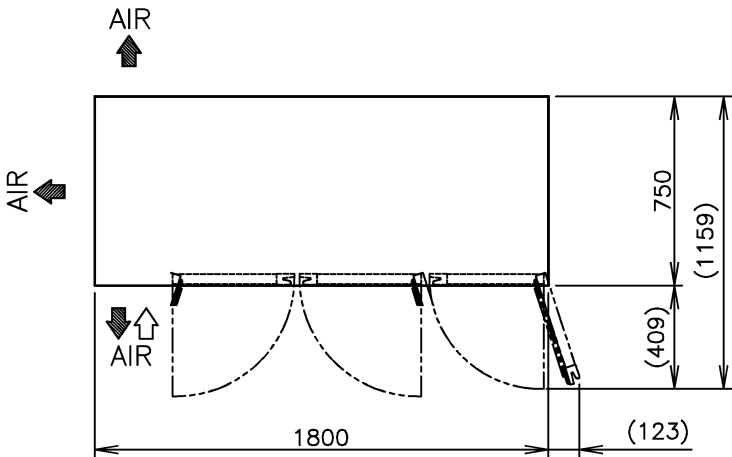


VIEW A(1/10)



ITEM	Hoshizaki Undercounter Freezer
MODEL	FT-188MA
POWER SUPPLY	1 Phase 220V~ 50Hz Capacity: 0.81kVA (3.68A)
AMPERAGE	Rated 2.7A
ELECTRIC CONSUMPTION	399W Heater 397W Defrost 330W
HEAT REJECTION	*W
POWER CORD	2.3m (Plug with Earth Wire)
EFFECTIVE CAPACITY	442L
OUTSIDE DIMENSIONS	1800mm (W) x 750mm (D) x 800 (790-820)mm (H)
INSIDE DIMENSIONS	1440mm (W) x 586mm (D) x 599mm (D)
EXTERIOR	Stainless Steel, Galvanized Steel (Rear / Bottom)
INTERIOR	Stainless Steel, ABS Plastic (Door)
INSULATION	Polyurethane Foam
INSULATION FOAM BLOWING AGENT	Cyclopentane
REFRIGERATION SYSTEM	Forced Air Circulation
DEFROST SYSTEM	Glass Tube Heater
COMPRESSOR	Hermetic
CONDENSER	Fin and Tube type, Air-cooled
EVAPORATOR	Fin and Tube Type
REFRIGERANT	R404A
TEMPERATURE CONTROL	Microprocessor controlled Adjustable from -23 to -7°C
DEFROST CONTROL	Microprocessor controlled
ELECTRIC CIRCUIT PROTECTION	Fuse, Earth Wire
COMPRESSOR PROTECTION	Motor Protector
LEG	Plastic Adjustable 90 to 120mm
SHELF	3pcs.
WEIGHT	Net: 101kg (Gross: Approx. 124kg)
PACKAGE	Carton 1865mm (W) x 830mm (D) x 790mm (H)
ACCESSORIES	-
OPERATING CONDITIONS	Ambient Temperature: 5-43°C Voltage Range: Rated Voltage±6%

*We reserve the right to make changes in specifications and design without prior notice.

1. Install the product properly in accordance with the instructions on location, electrical connections stated in the instruction manual provided. Allow 10mm extra space at the installation site to meet any installation requirements (additional spacing is also required for proper air flow and pipe connections).
2. The heat rejection is based on the reached pulldown temperature at ambient temperature of 35°C and power supply of 220V 50Hz. The amperage and electric consumption are based on measurements at ambient temperature of 40°C and power supply of 220V 50Hz.
3. The cabinet temperature range of -23 to -7°C is guaranteed at ambient temperature of 35°C.
4. Product code: T278